



Alexandra Drive, SE19 | £600,000

02087029999

newhomes@pedderproperty.com

pedder
NEW HOMES

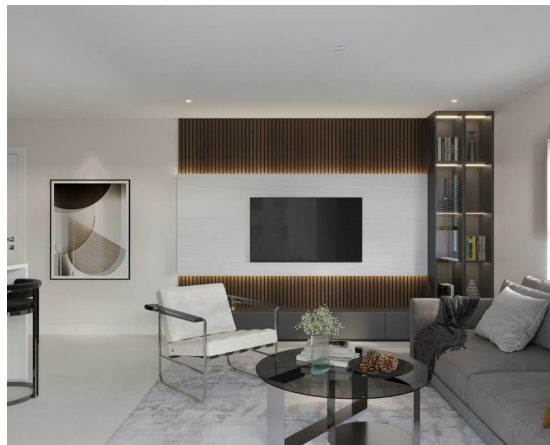


In General

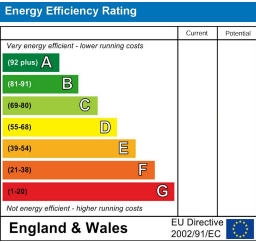
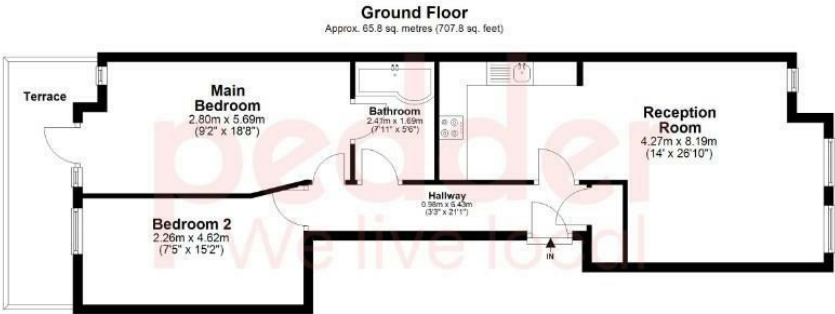
- Two-bedroom apartment
- Integrated Bosch appliances
- 10-year Building warranty
- 2-year fixture and fitting warranty
- Large private terrace
- Predicted EPC A rating
- Video entry system
- Close to Gipsy Hill station
- Communal Gardens
- Excellent location

In Detail

Alexandra House is a boutique collection of nine, brand-new, beautifully crafted, 2- & 3-bedroom apartments set in the heart of Gipsy Hill.



Floorplan



Total area: approx. 65.8 sq. metres (707.8 sq. feet)

Copyright www.pedderproperty.com 2024. These plans are for representation purposes only as Defined by RICS - Code of Measuring Practice. Not drawn to scale, windows and door measurements are approximate, please check dimensions, shapes and compass bearings before making any decisions reliant upon them.

Plan produced using PlanUp.

Pedder Property Ltd trading as Pedder for themselves and for the vendor/landlord of this property whose agents they are, give notice that (1) these particulars do not constitute any part of an offer or contract, (2) all statements contained within these particulars are made without responsibility on the part of Pedder or the vendor/landlord, (3) whilst made in good faith, none of the statements contained within these particulars are to be relied upon as a statement of representation or fact, (4) any intending purchaser/tenant must satisfy him/herself by inspection or otherwise as to the correctness of each of the statements contained within these particulars, (5) the vendor/landlord does not make or give either Pedder or any person in their employment any authority to make or give representation or warranty whatsoever in relation to this property.